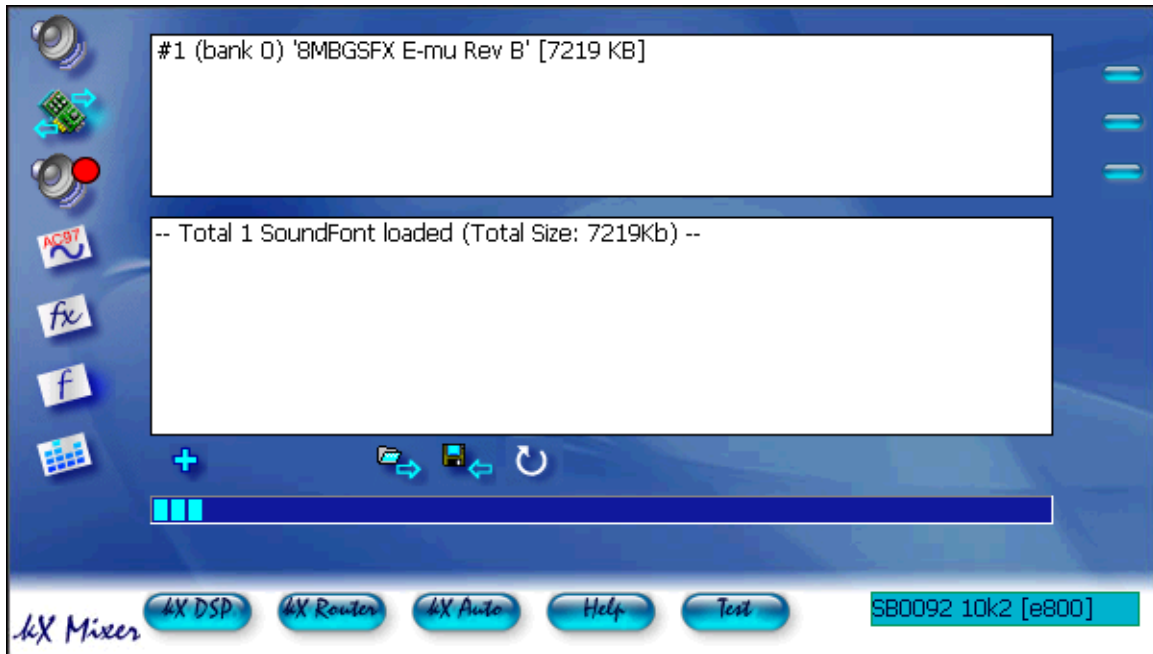


Playing Soundfonts Using Your MIDI Keyboard Stand Alone

With the MIDI OX driver, you can play your soundfonts with your MIDI keyboard Stand Alone. Thanks to LeMury (A kX Project Programmer) for letting us know this is possible. Here's a guide on how to do this.

This guide assumes you have your MIDI keyboard connected to your computer, and that you are using the kX Project Audio Driver.

I'm using one soundfont (a GM soundfont) to keep this simple.
Load a soundfont:



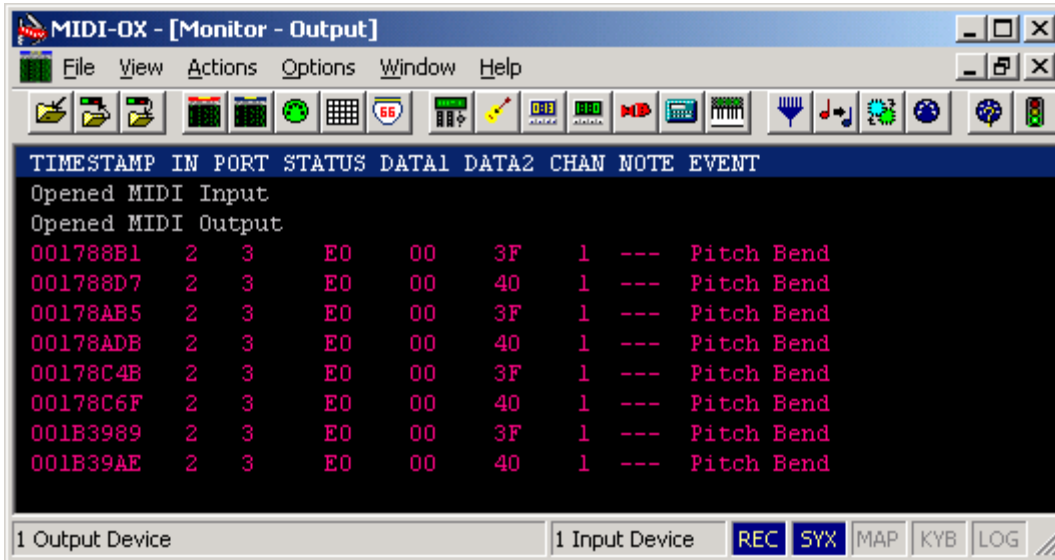
To load a soundfont click on the +, browse to the soundfont location, select it, and hit Open to load it.



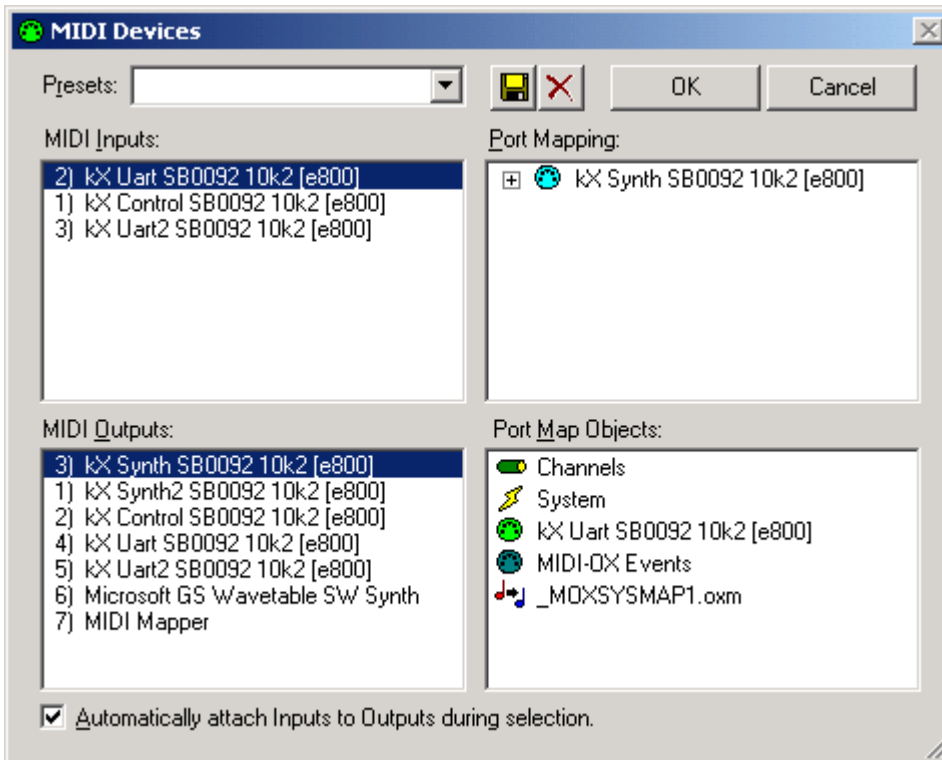
Confirm to load the soundfont by clicking on the check mark. You can close the kX mixer, now.

Download the MIDI OX midi utility from here: <http://www.midiox.com/>

Install MIDI OX, and (if you used the default installation paths) open the program by double clicking the MIDI OX shortcut on your desktop. You should have a window that looks similar to this:



On the toolbar, go to Options/Midi Devices to bring up this window:

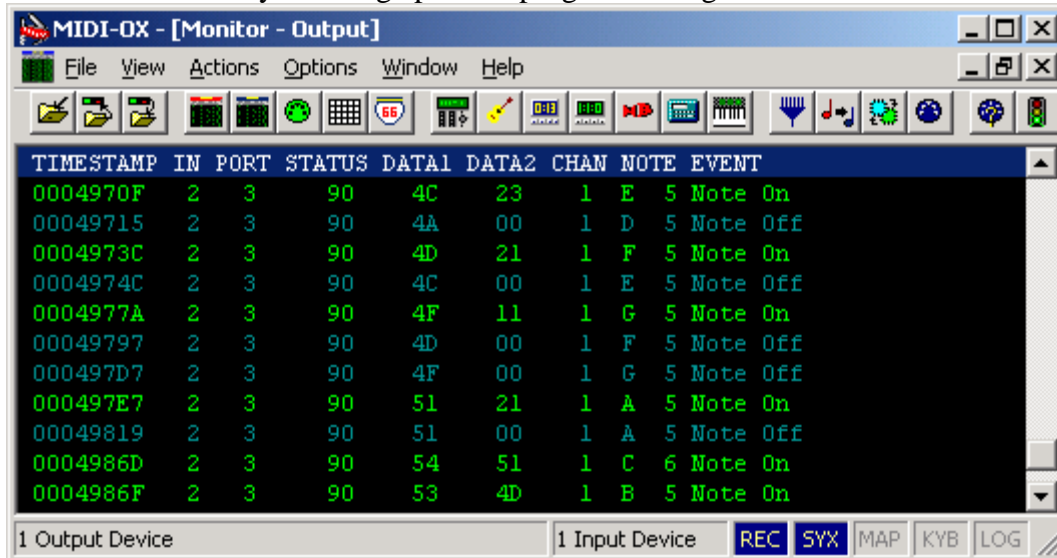


You can select the same MIDI input and output as highlighted in the pic above. Also insure there's a check mark next to Automatically attach Inputs to Outputs during selection. Press OK after selecting your inputs and outputs.

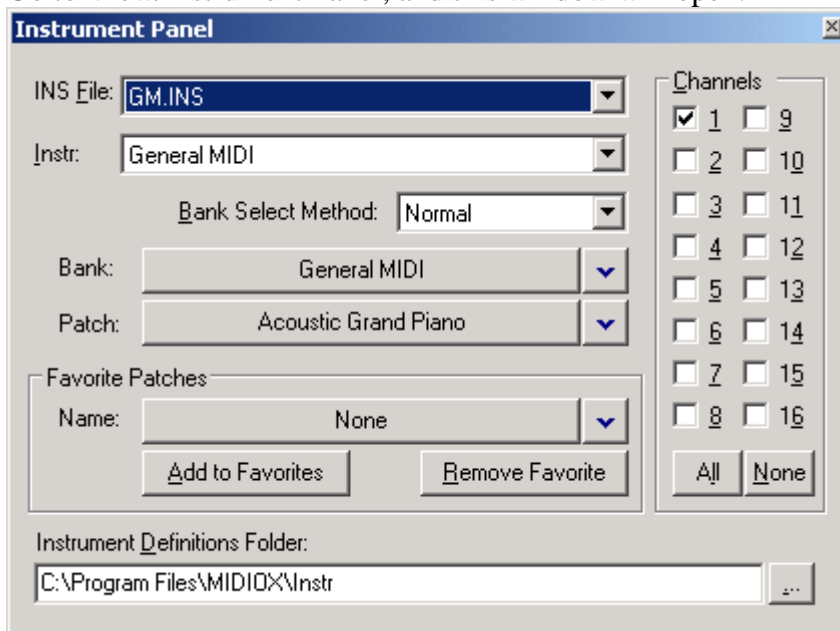
Note: The MIDI OX utility has to remain open to play soundfonts, but you can minimize the window.

If you have not already done so, turn on your MIDI keyboard and play. You should be able to hear the selected patch of the soundfont you have loaded. You can use the change patch/program button on your MIDI keyboard to browse through the available patches/programs of the soundfont you have loaded. This is a simple and fast way to change patches/programs.

There is another way to change patches/programs using the MIDI OX User Interface.



Go to View/Instrument Panel, and this window will open:



From the patch drop down list, you can select whatever patch you want.

It's easy to play your soundfonts without having to go into a sequencer program. This is useful to practice playing piano, or just to test out new soundfonts you have. I think it's a neat thing to know for us using the kX Audio Driver, so I want to help to pass it along. I hope you find this useful as I do.

Thomas Barnes